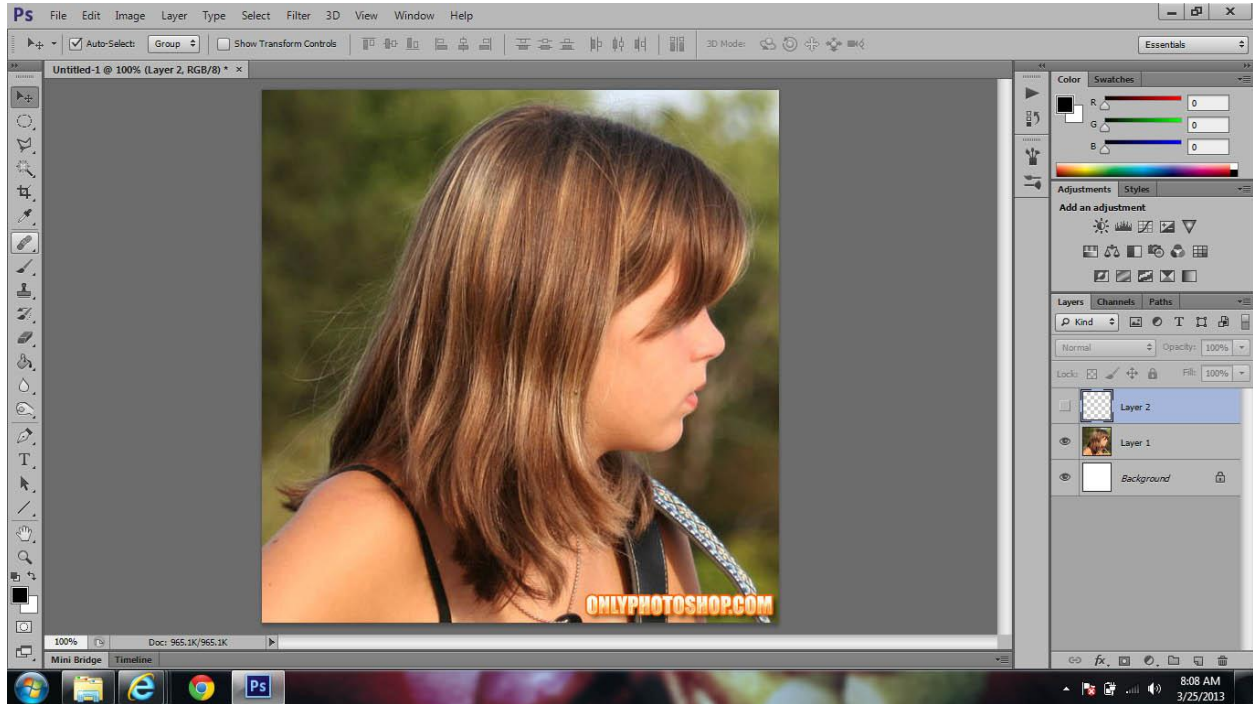
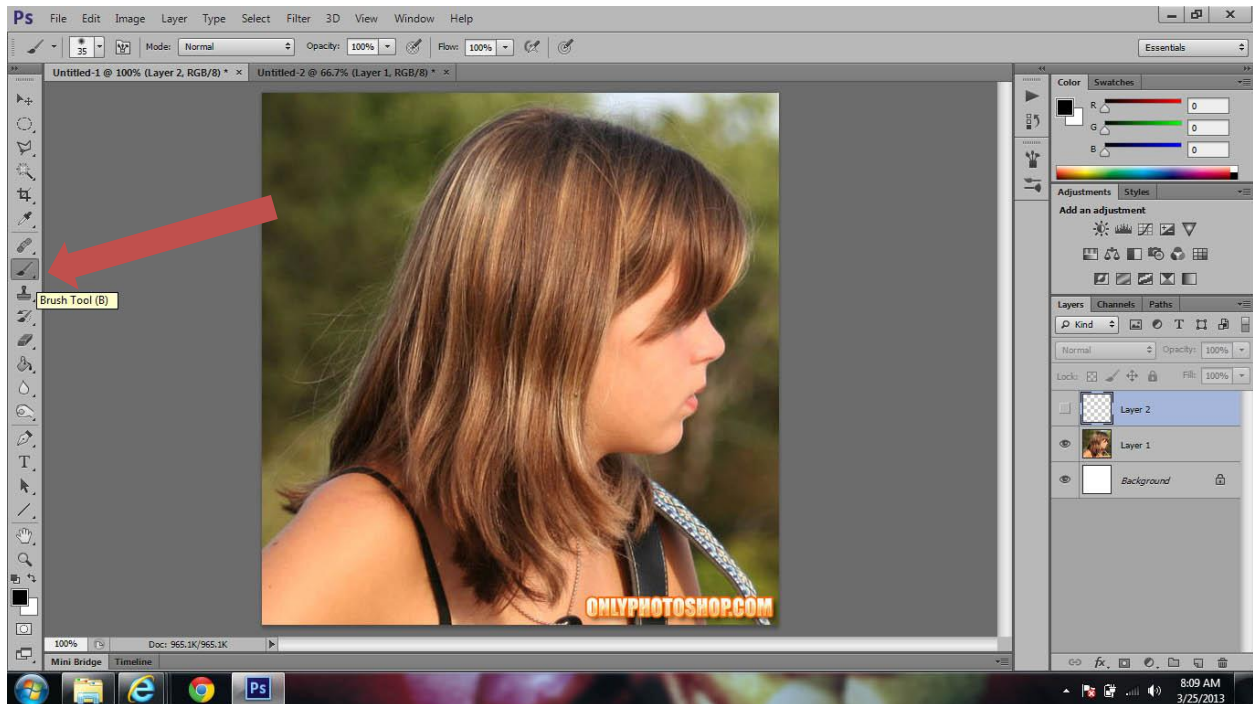


Hair Color Change

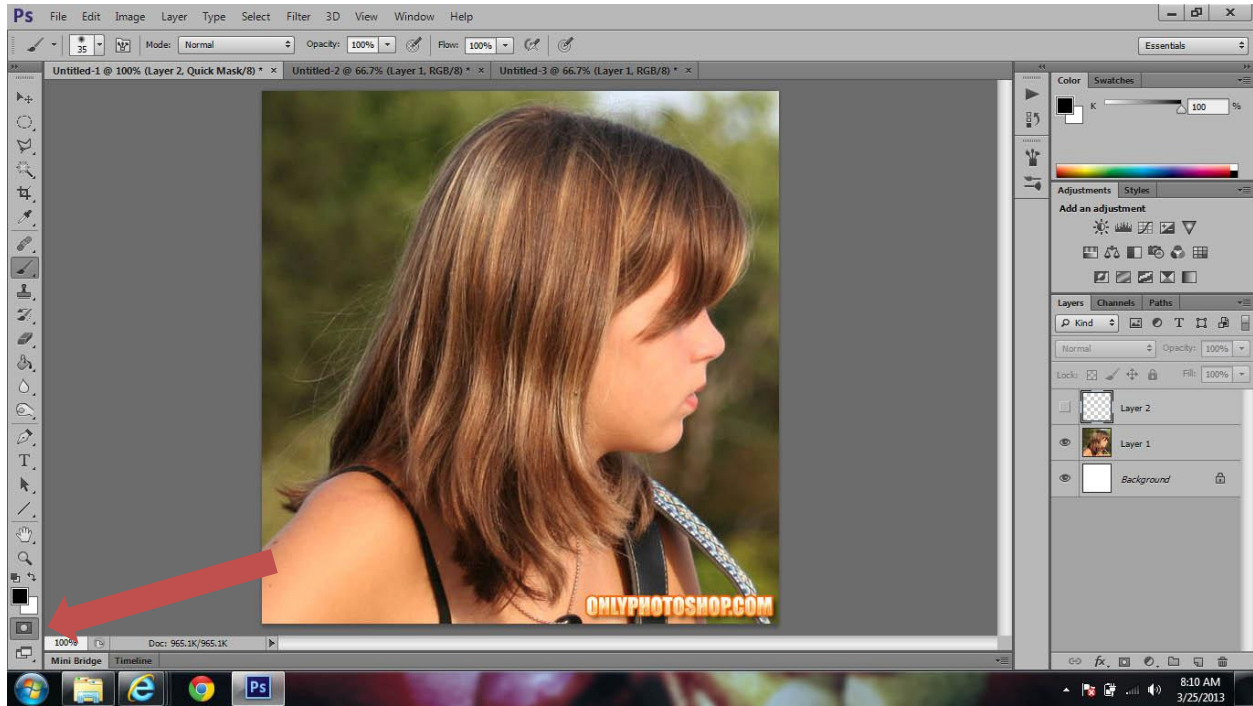
Copy and Paste Image off my website



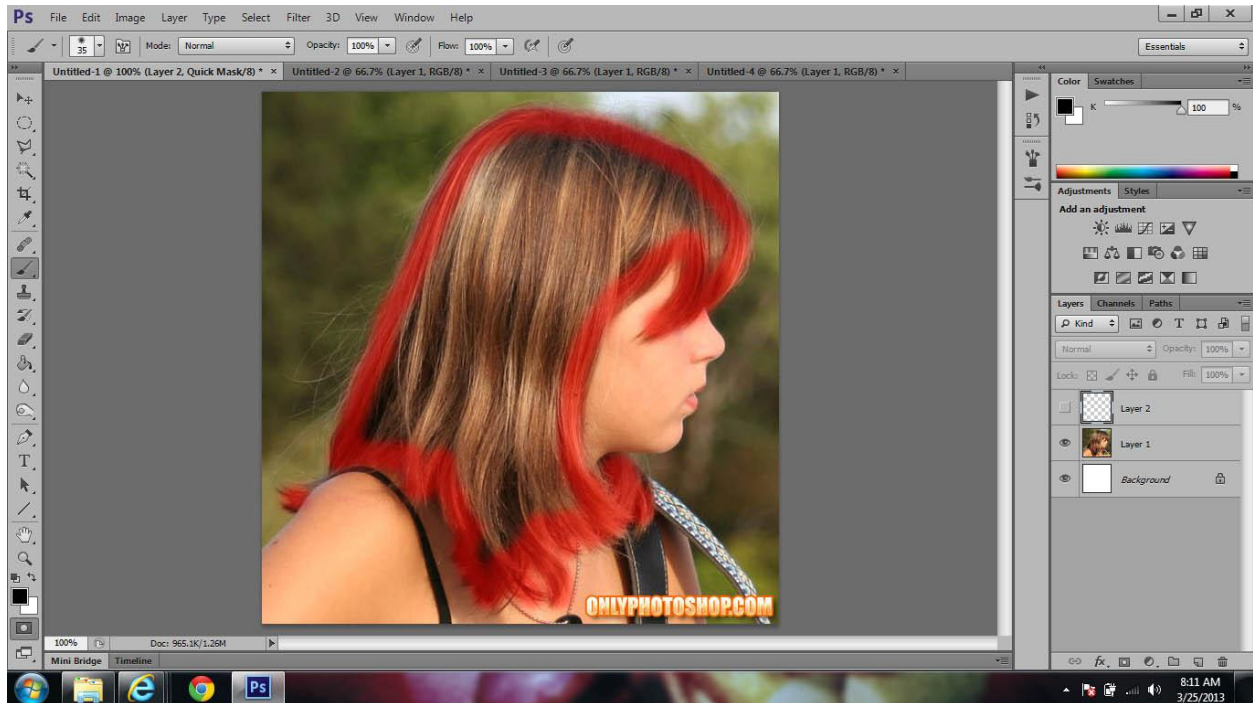
Choose the brush tool



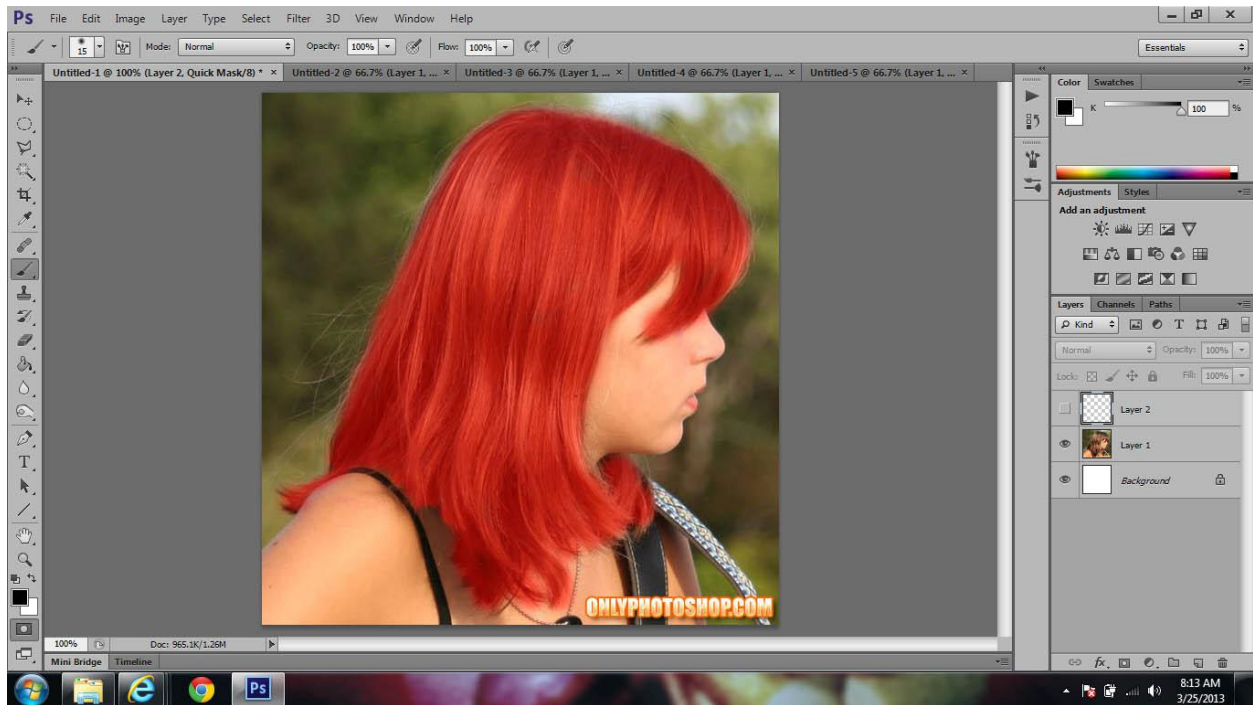
Click Quick Select



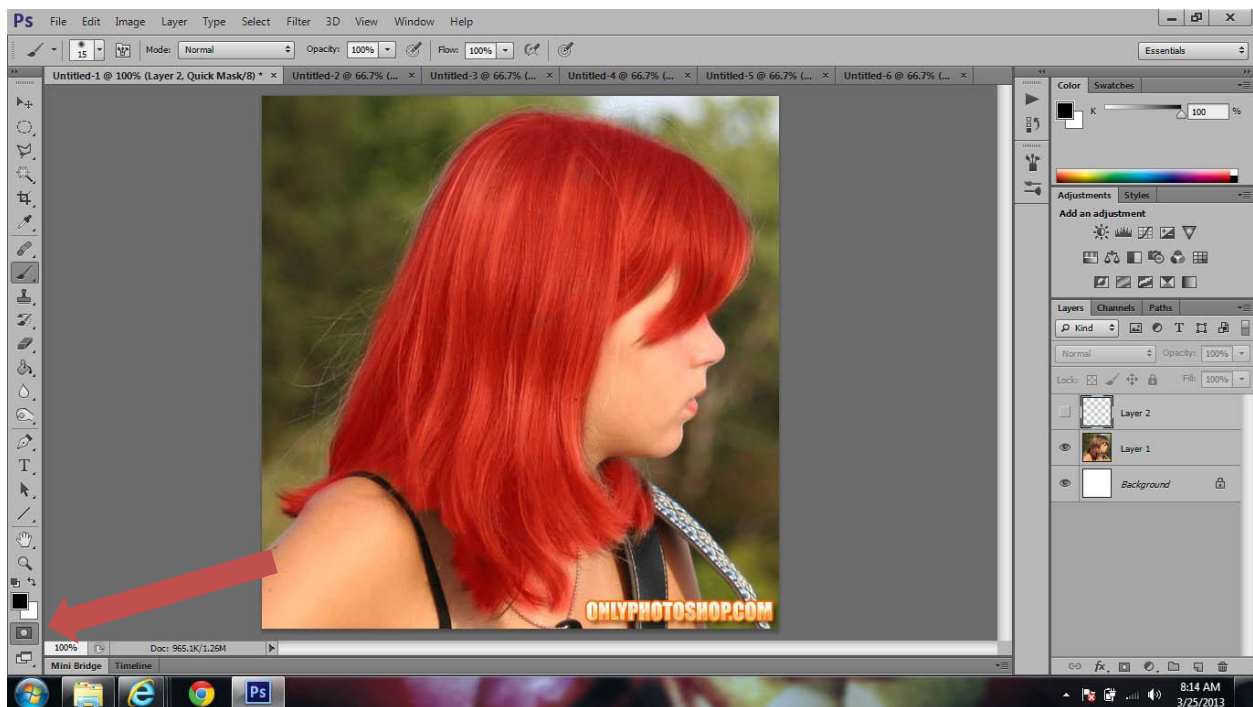
Carefully trace and outline of the girls hair



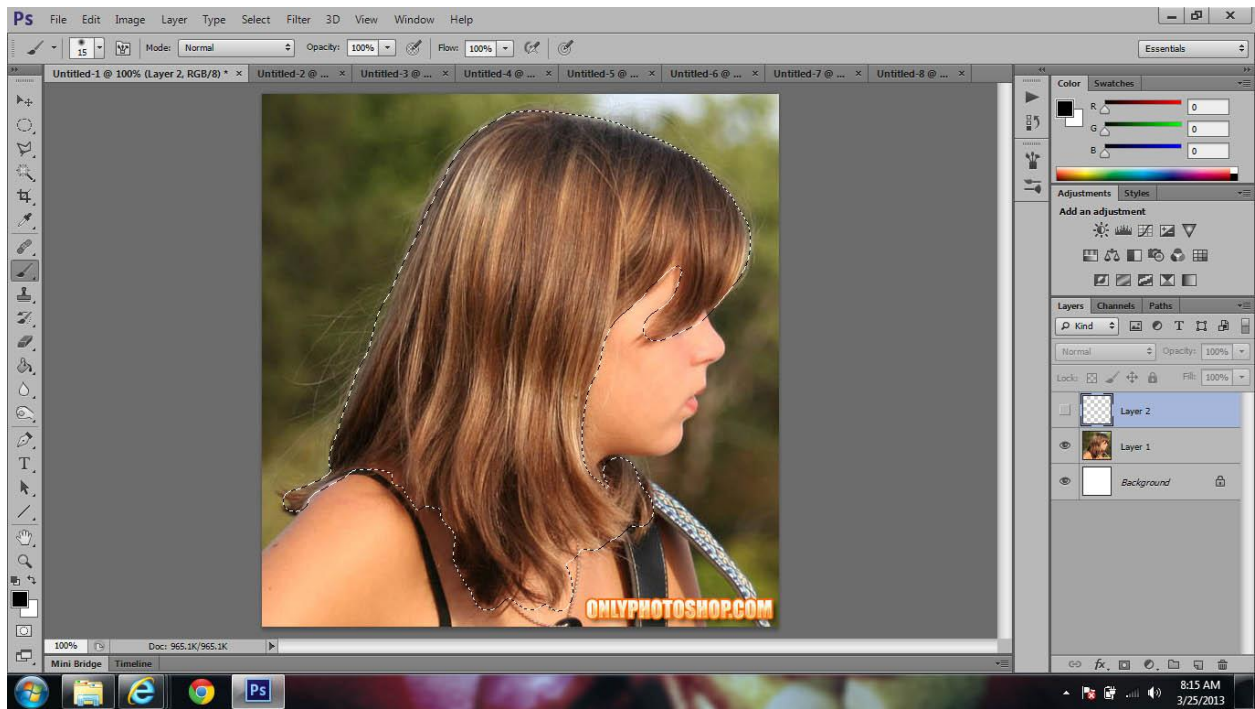
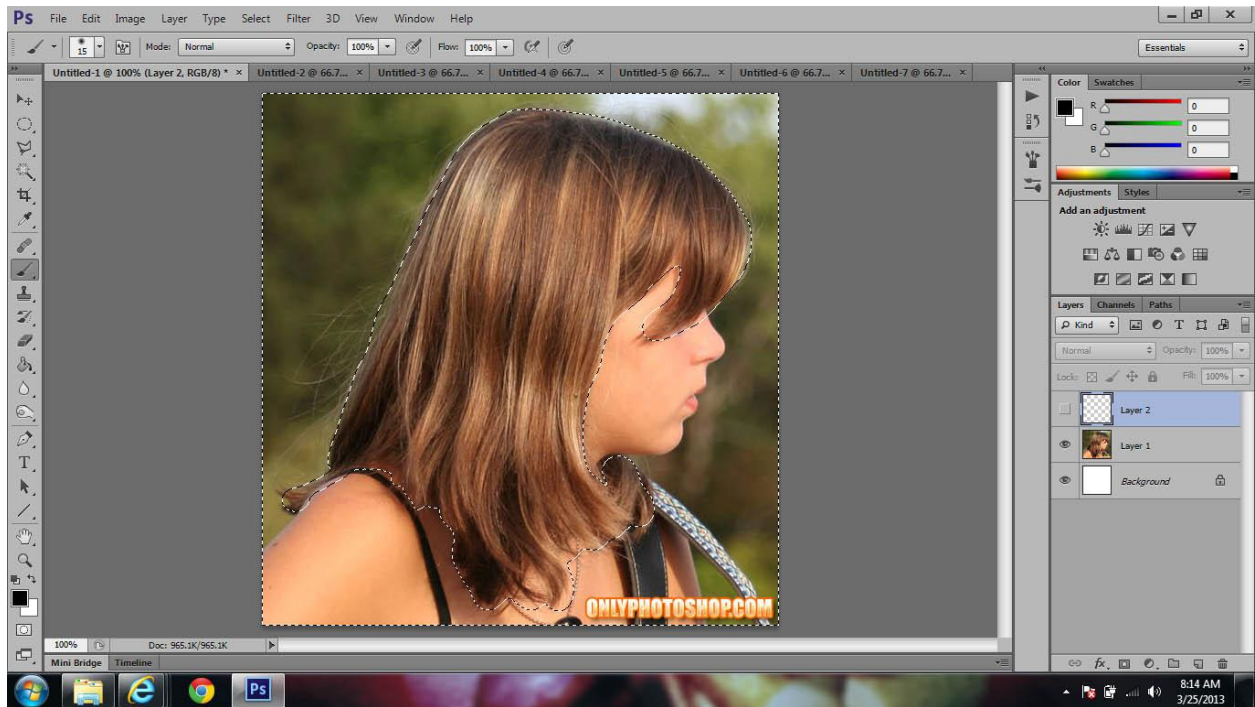
Fill in the remaining space



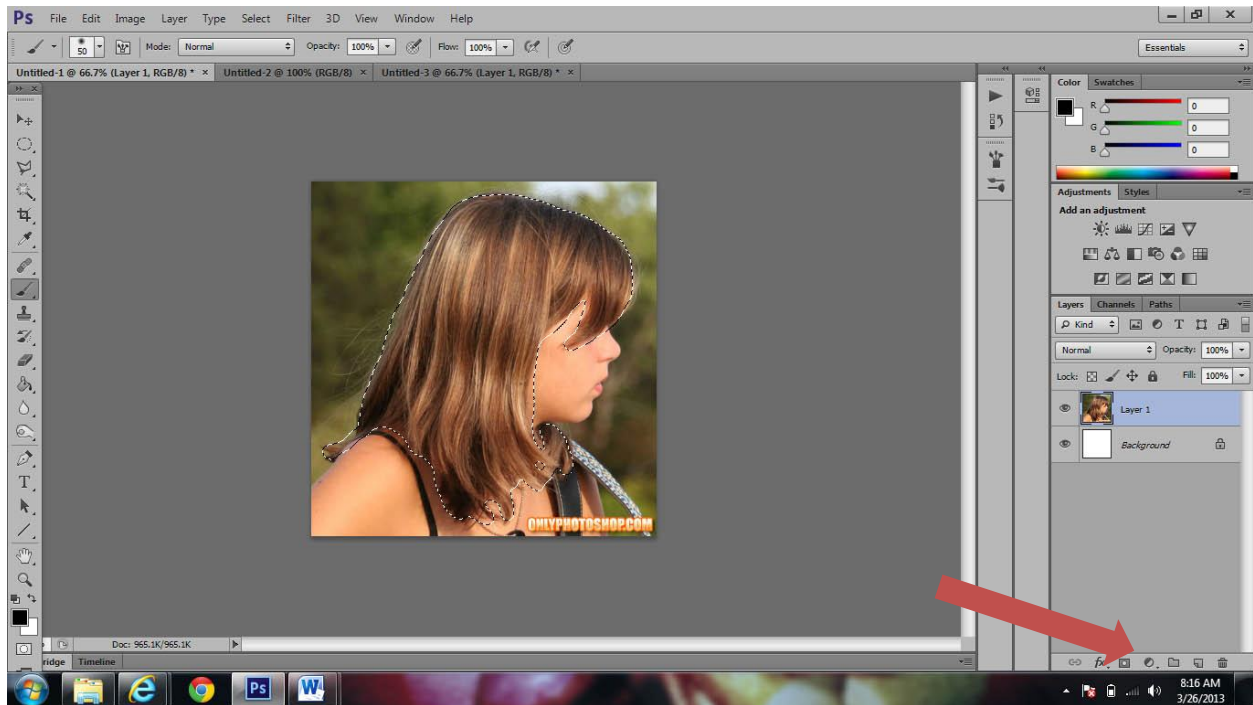
Click Quick mask button to turn off quick mask mode



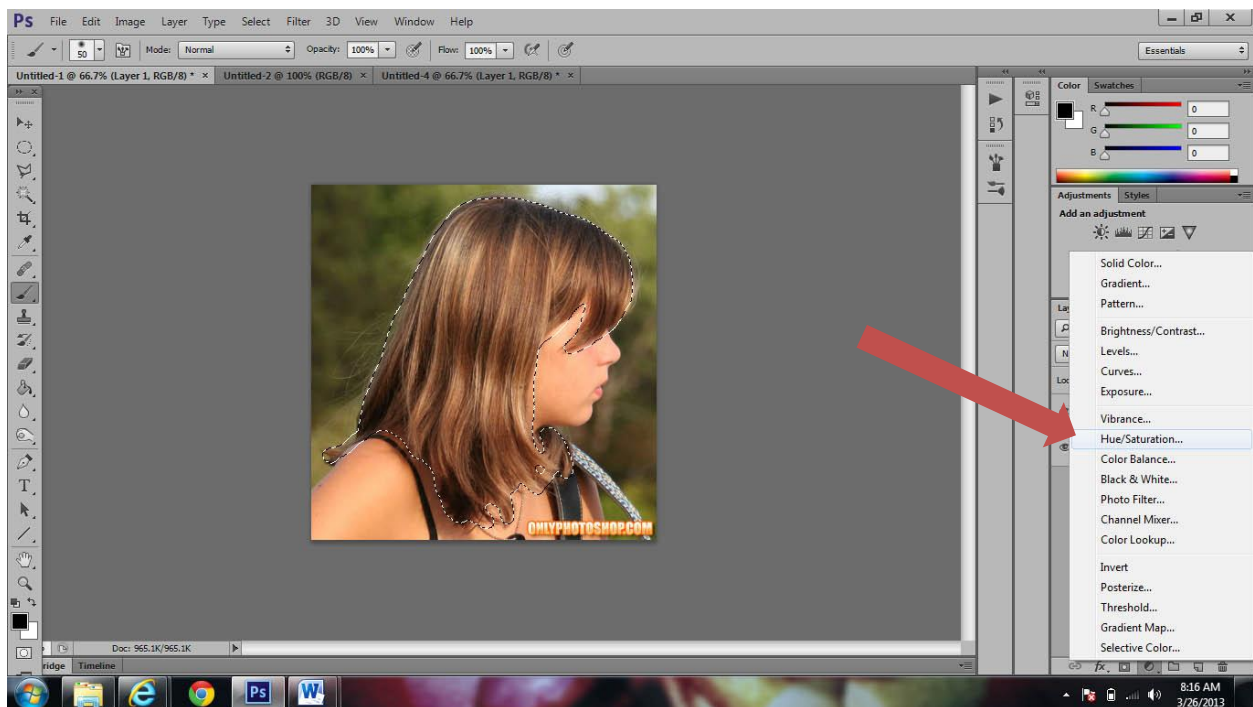
Invert the selection by clicking Cmd+Shift+I



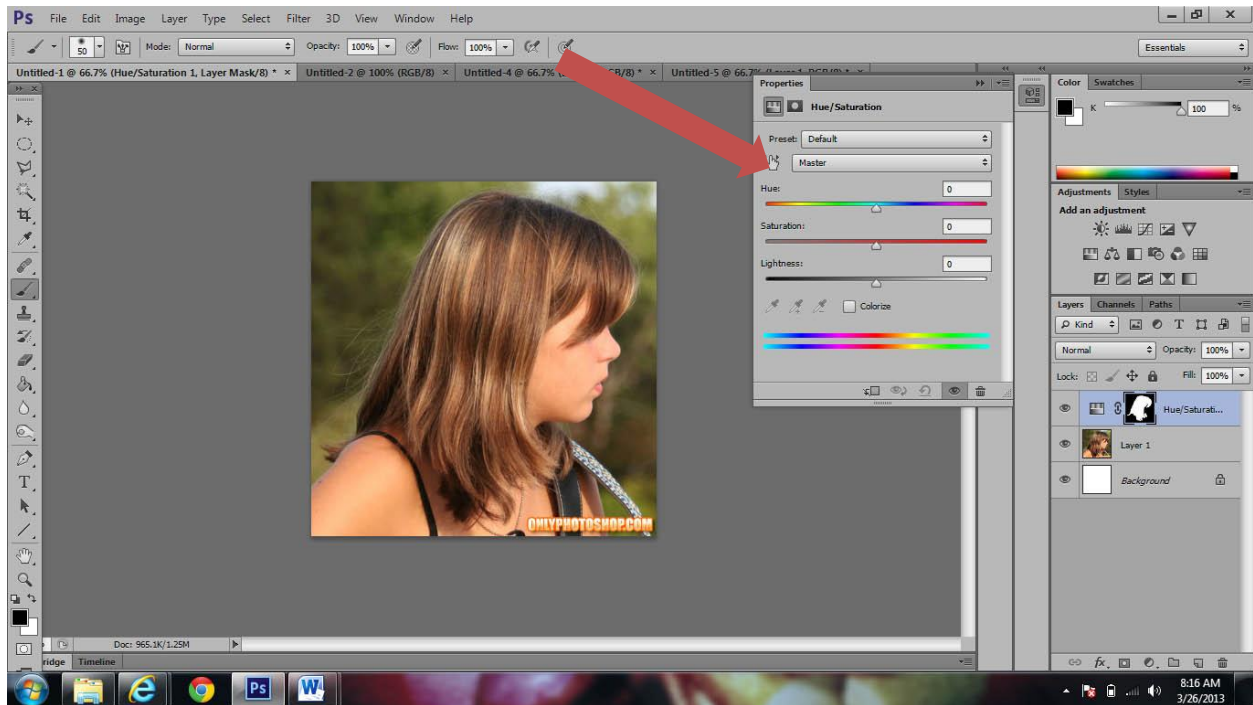
Click on the layer mask button on the “Layers Pallet”



Choose “Hue and Saturation”



Adjust hue and saturation levels as you like to change color



The benefit of using this layer mask is to be able to edit/ fix mistakes such as color on the skin. Use the brush tool in colors black and white to “erase” the color!

